



SunCast

Urethane Modified Concrete

***Durable and Environmentally Friendly
Designed for easy installation.***

SunCast Urethane Modified Concrete

SunCast is designed for use in the most demanding food and beverage processing areas where high resistance to impact, abrasion and chemical resistance to organic food acids is required.

SunCast is formulated with renewable raw materials and contains no VOCs, making it a viable option for environmentally friendly projects. It offers exceptional thermal shock resistance and is available with an anti-microbial additive to inhibit the growth of bacteria and microorganisms.

Not only is **SunCast** durable and environmentally friendly, but it was also designed to address limited work-time. This is a common industry problem that often occurs during the installation of polyurethane concretes. In response to this, we developed 2 formulations of **SunCast**. Our Fast Cure formulation was designed for installations that require a quick turnaround. Our Regular Cure formulation offers more work-time and a slower set time which equates to a much easier installation and better overall aesthetics of your finished flooring system.

Benefits of Urethane Mortar vs. Epoxy

The physical properties of urethane mortar systems are far superior to that of epoxy systems when it comes to specific applications such as heavy-duty industrial food processing, pharmaceutical manufacturing facilities, breweries or meat, fish and dairy processing plants. Below is a list of attributes where urethane mortar excels over epoxy.

- ✓ Withstands heavy abuse
- ✓ Very low odor
- ✓ No risk to open food products
- ✓ Impervious to radical temperature changes
- ✓ Withstands extreme temperatures

All systems are available in Fast-Cure and Regular-Cure formulations

SunCast

- ✓ Longer Work-Time
- ✓ Thermal Shock Resistant
- ✓ Regular-Cure Formulation
- ✓ Fast-Cure Formulation
- ✓ Anti-Microbial
- ✓ Unique Chemical Resistance





SunCast System & Product Overview

SunCast CM

A heavy duty urethane mortar that is designed for troweling cove. SunCast CM can withstand extreme physical and chemical abuse including steam cleaning and heavy impact. The outstanding chemical resistance of SunCast CM is well suited for areas exposed to strong acids, alkali, hot oils, animal fat and most solvents.

SunCast RT

A heavy duty flowable urethane mortar that is designed to resurface moderately deteriorated concrete and withstand extreme physical and chemical abuse, including, but not limited to steam cleaning, carts and heavy impact.

SunCast RT produces a smooth, easy to clean matte finish.

SunCast RT-B

A heavy duty flowable urethane mortar that is broadcast with colored quartz. The SunCast RT-B System is designed to resurface moderately deteriorated concrete and withstand extreme physical and chemical abuse, including, but not limited to steam cleaning, carts and heavy impact. SunCast RT-B produces a textured surface ideal for wet environments. The use of blended color quartz offers improved esthetics.

SunCast SL

SunCast SL A medium-duty urethane slurry that is designed to resurface concrete and withstand physical and chemical abuse, including, but not limited to high abrasion and impact. It also has outstanding chemical resistance. The SunCast SL system produces a smooth, easy to clean matte finish.

SunCast SL-B

A medium-duty urethane slurry that is broadcast with colored quartz. This system is designed to resurface concrete and withstand physical and chemical abuse, including, but not limited to high abrasion and impact. It also has outstanding chemical resistance. SunCast SL-B produces a textured surface ideal for wet environments. The use of blended color quartz offers improved esthetics.

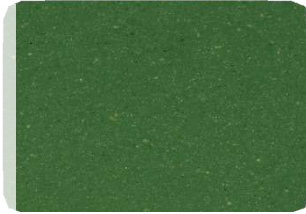
SunCast TG System

SunCast TG is a heavy duty trowel applied urethane mortar that is designed to resurface badly deteriorated concrete and withstand extreme physical and chemical abuse including steam cleaning, steel wheeled carts and heavy impact. SunCast TG has outstanding chemical resistance to most solvents and is perfect for areas exposed to strong acids, alkali, hot oils and animal fat.

SunCast Colors



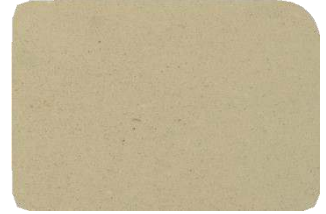
Dark Red



Evergreen



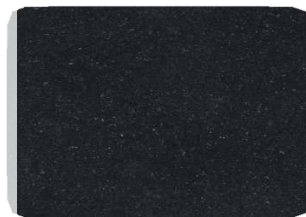
Light Grey



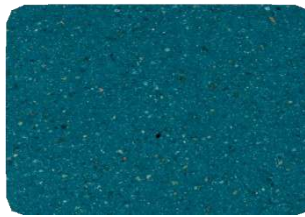
Natural



Bronze



Coal



Cobalt



Dark Grey

SunCast is perfect for:

- ◆ Food & Beverage Processing Areas
- ◆ Commercial Kitchens
- ◆ Pharmaceutical Facilities
- ◆ Breweries
- ◆ Meat and Fish Processing Plants
- ◆ Dairy Processing Plant
- ◆ Commercial Applications
- ◆ *...Anywhere you have concrete!*



Sundeck Products USA, Inc. • 805 Avenue H., Suite 508 • Arlington, TX 76011
Toll Free (877) 478-6335 • Fax: (817) 649-7292 • solutions@sundek.com •

Form 682 8/17 © 2017 SUNDEK

