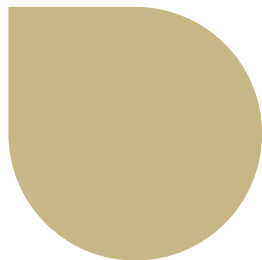


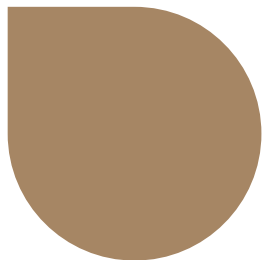


# INTEGRAL CONCRETE COLORS

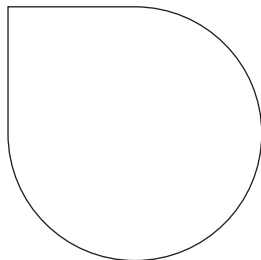
Superior concrete colorant providing consistent color throughout the entire application. Add a colored release agent to add depth and create custom looks that emulate wood, stone, brick and tile.



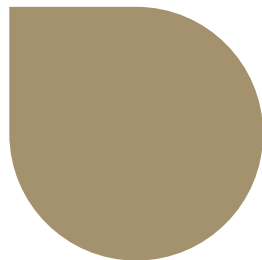
CORK



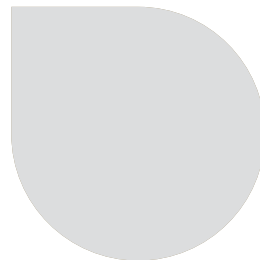
BURLAP



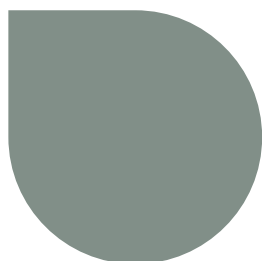
MARBLE WHITE



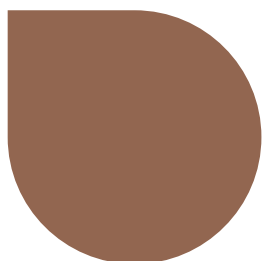
ARTISAN CLAY



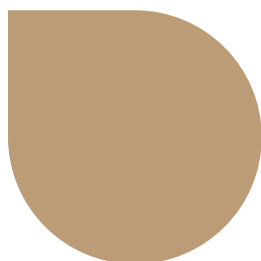
CONCRETE GRAY



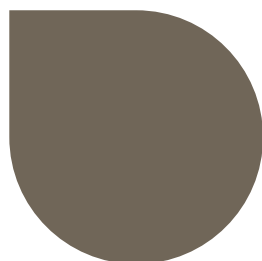
URBAN SLATE



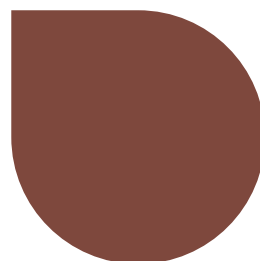
RICH EARTH



BUFF



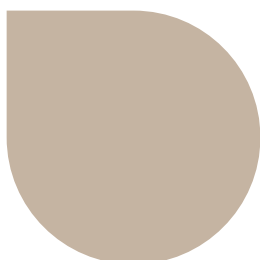
MINK



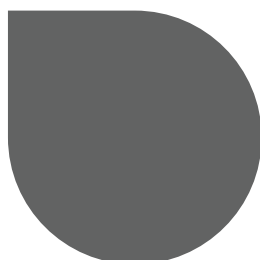
OLD ENGLISH RED

# ANTIQUUE RELEASE POWDERS

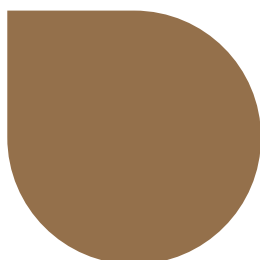
Provides additional accenting to the textured surface of concrete to add an antiqued look.



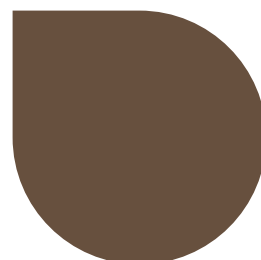
DOVE GRAY



GRANITE GRAY



CAPPUCCINO



DARK WALNUT

Colors on this chart are representations only. They attempt to approximate the final appearance of integrally colored concrete. Multiple factors will cause variations including, but not limited to: finishing techniques, curing methods, amount and exposure of aggregates, raw materials and project conditions. Combinations of integral colors with antique release powders may produce differences than colors represented on this chart. It is strongly advised that selection of color is made from a sample prior to installation.