



YOU STAND **ON IT.
WE STAND **BEHIND** IT.**



SYSTEM BOOKLET

SUNWASH®

**ADVANCED
COATINGS**

**VERTICAL &
HORIZONTAL
APPLICATIONS**



Introducing **SUNWASH**

WELCOME TO OUR **SUNWASH** SYSTEM

A white sun icon with rays, positioned between the words 'OUR' and 'SUNWASH'.

At Sundek, we pride ourselves on delivering innovative solutions that combine aesthetics with durability. **The Sunwash System** is designed to rejuvenate and enhance concrete surfaces, offering a versatile and long-lasting finish for both vertical and horizontal applications.



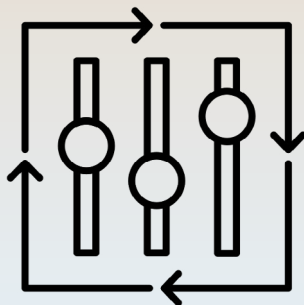
UNMATCHED DURABILITY

Sunwash is engineered to withstand heavy pedestrian traffic within 24 hours and vehicular traffic within 72 hours, ensuring minimal downtime and maximum resilience.



VERSATILE APPLICATIONS

Whether it's refreshing old, deteriorated concrete or enhancing new installations, Sunwash provides a sanded or exposed aggregate finish that elevates the visual appeal of any space.



CUSTOMIZABLE AESTHETICS

With unlimited color options, including white, Sunwash allows for endless design possibilities to match any project's unique requirements.



ECO-FRIENDLY SOLUTION

Sunwash contributes to sustainable building practices by incorporating recycled aggregates and materials, making it an environmentally conscious choice for modern construction.



COMMERCIAL
PROJECTS
RESIDENTIAL
ENHANCEMENTS
PUBLIC
SPACES
APPLICATIONS

Sunwash is the ideal solution for transforming and protecting concrete surfaces across a wide range of environments. Whether revitalizing high-traffic commercial spaces, enhancing the durability of residential patios and driveways, or adding a decorative touch to public walkways and parks, Sunwash provides a seamless blend of strength and style. Its slip-resistant and weather-resistant properties make it a versatile choice for both interior and exterior applications, ensuring long-term performance and visual appeal.



COMMERCIAL PROJECTS

Sunwash has been successfully applied in high-traffic areas such as parking structures and retail centers, demonstrating its capability to handle substantial wear while maintaining its aesthetic appeal.



RESIDENTIAL ENHANCEMENTS

From driveways to patios, Sunwash transforms residential spaces by providing a durable and attractive surface that complements any architectural style.



PUBLIC SPACES

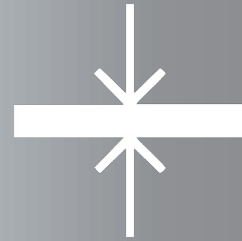
Ideal for parks, walkways, and other communal areas, Sunwash offers a slip-resistant and visually appealing solution that stands up to the demands of public use.

SUNWASH SYSTEM **TECHNICAL** SPECIFICATIONS



COMPOSITION

Two-part polymer-modified cement-based architectural coating.



THICKNESS

Applicable from 1/8" to 1/4", providing a lightweight yet robust surface.



Sunwash is engineered with advanced polymer-modified cement technology, delivering a high-performance coating that bonds tenaciously to existing concrete surfaces. Its lightweight yet durable composition ensures long-lasting resilience, while customizable thickness and color options provide versatility for various applications. Designed to withstand heavy traffic and environmental stressors, Sunwash meets stringent industry standards for strength, adhesion, and aesthetic excellence.



BOND STRENGTH

Tenacious adhesion to existing substrates, ensuring longevity and performance.



COLOR OPTIONS

Unlimited, including the ability to match vibrant or pastel colors.





SURFACE PREPARATION

Proper surface preparation is essential to achieving a durable and lasting application. This includes thorough cleaning, grinding, and ensuring the substrate is free from contaminants. The surface must be adequately profiled to ensure proper adhesion of the Sunwash system.



APPLICATION

Mixing and applying Sunwash requires careful attention to detail. Follow the recommended ratios for combining Part A (liquid activator) and Part B (powder) to achieve a smooth and consistent blend.

Application techniques vary depending on the desired finish, and may include troweling, spraying, or rolling.



WASHING & CURING

After application, the surface must be properly washed and cleaned to remove any excess material. This process may include buffing, pressure washing, or acid touch-ups to refine the finish. Curing time will vary based on environmental conditions, but proper curing ensures optimal strength and longevity.



FINISHING DETAILS

The final steps of the process include saw cutting, sealing, and protecting the surface. Saw cutting ensures clean, precise joints, while sealing enhances durability and resistance to wear. Protective measures should be taken to maintain the integrity of the surface over time.

PREPARATION



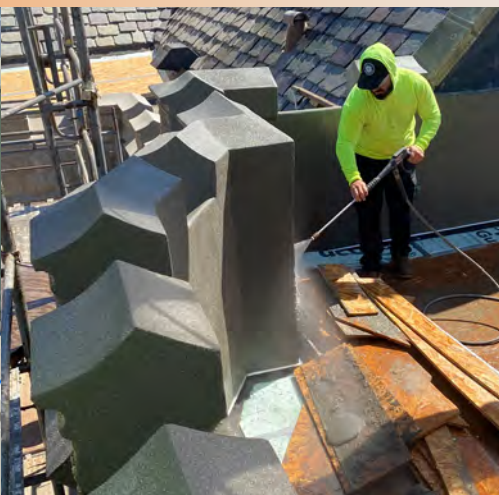
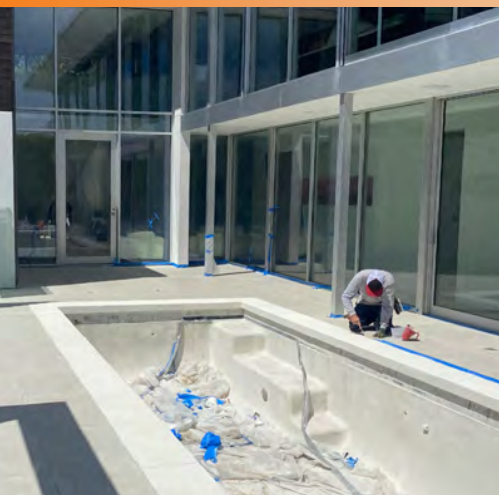
APPLICATION



**WASHING
& CURING**



**FINISHING
DETAILS**





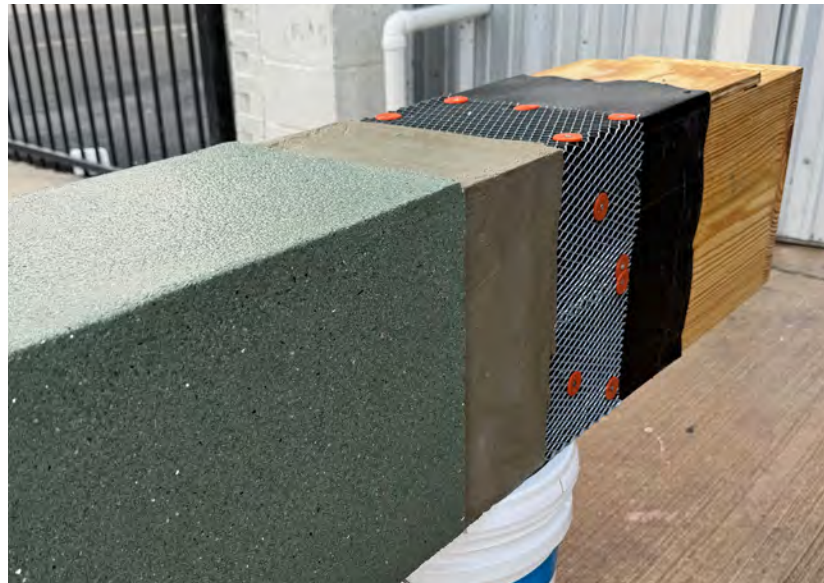
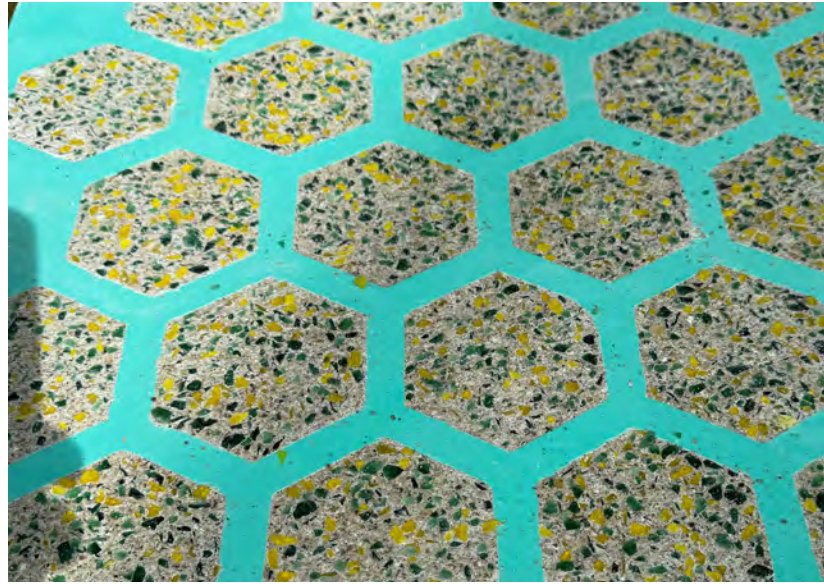
DESIGN CUSTOMIZATION

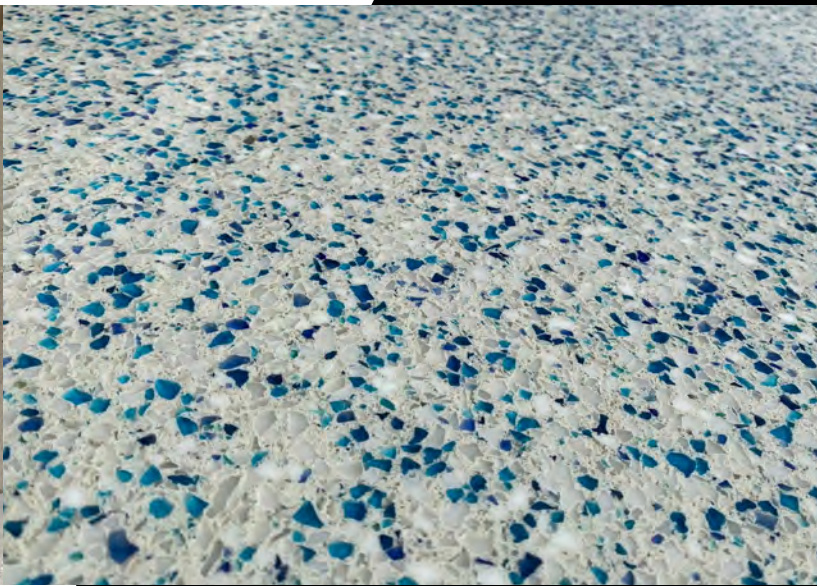
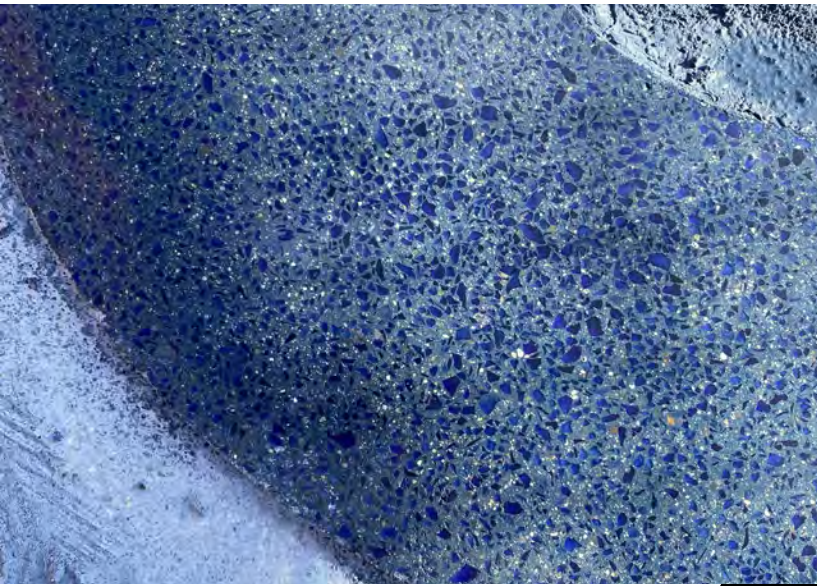
AGGREGATE INTEGRATION

Sunwash can be blended with various aggregates, including natural stone, glass, or seashells, to create unique textures and finishes that cater to specific design visions.

COLOR MATCHING

Our system allows for precise color matching, enabling designers to achieve cohesive aesthetics across different elements of a project.



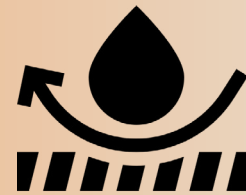


SUNWASH SYSTEM MAINTENANCE & CARE



ROUTINE CLEANING

Maintain the beauty and functionality of Sunwash surfaces with regular cleaning using mild detergents and water.



PERIODIC SEALING

Periodic sealing is recommended to protect the surface and enhance its longevity, especially in high-traffic or exposed areas.



Keeping Sunwash surfaces in prime condition is easy with proper maintenance and care. **Regular cleaning, periodic sealing, and prompt repairs ensure the longevity and aesthetic appeal of the system.** Following these guidelines will help preserve the surface's durability and enhance its performance over time.



MAINTAINING REPAIRS

In the unlikely event of damage, Sunwash surfaces can be repaired seamlessly, ensuring the integrity and appearance of the installation are preserved.



SCAN ME FOR
MORE TIPS ON
MAINTENANCE







SUNDEK FAQ's SUNWASH

Choosing the right concrete resurfacing solution can come with many questions. **Here, we address some of the most common inquiries about Sunwash**—its applications, durability, maintenance, and more—to help you make informed decisions and get the best results from your installation.

CAN SUNWASH BE APPLIED OVER EXISTING COATINGS?

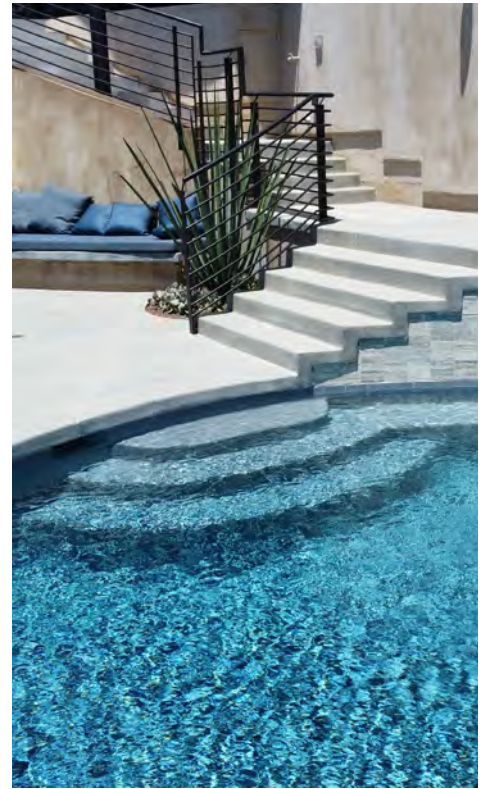
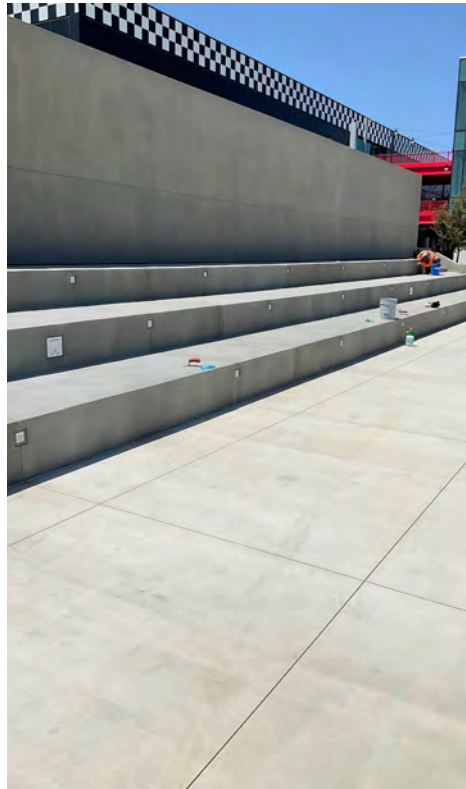
Yes, provided the existing coating is sound and properly prepared to receive the new application.

IS SUNWASH SUITABLE FOR FREEZE-THAW CLIMATES?

Absolutely. Sunwash has demonstrated excellent performance in extreme weather conditions, including freeze-thaw cycles.

HOW DOES SUNWASH CONTRIBUTE TO SUSTAINABLE BUILDING PRACTICES?

Sunwash integrates recycled aggregates and low-VOC materials, making it an environmentally responsible choice for modern construction.



CAN SUNWASH BE USED IN BOTH INTERIOR & EXTERIOR APPLICATIONS?

Yes, Sunwash is designed for both indoor and outdoor environments, providing durability and aesthetic appeal in a variety of settings.

WHAT IS THE EXPECTED LIFESPAN OF A SUNWASH APPLICATION?

With proper maintenance, Sunwash provides a long-lasting finish that stands the test of time.

IS SUNWASH SLIP-RESISTANT?

Yes, Sunwash is formulated to provide a slip-resistant surface, making it ideal for areas with heavy foot traffic and safety concerns.

CAN SUNWASH BE CUSTOMIZED TO MATCH SPECIFIC PROJECT AESTHETICS?

Absolutely. Sunwash can be tinted in a wide range of colors and integrated with different aggregates to achieve a unique look.

DOES SUNWASH REQUIRE SPECIAL MAINTENANCE?

Regular cleaning and periodic sealing will help maintain the surface's integrity and appearance over time.

CAN SUNWASH BE APPLIED IN EXTREME TEMPERATURES?

Yes, but application techniques may vary. In very hot or cold conditions, adjustments may be necessary to ensure optimal curing and performance.



THE FUTURE IS BRIGHT WITH **SUNDEK®**



SCAN ME

SUNDEK – INNOVATING CONCRETE SURFACES FOR OVER 50 YEARS

For over 50 years, Sundeck has been a leader in innovative concrete resurfacing solutions, transforming ordinary surfaces into extraordinary spaces. Our commitment to quality, durability, and design flexibility has made us a trusted partner for architects, contractors, and property owners nationwide. Whether enhancing commercial, residential, or public environments, Sundeck's cutting-edge systems deliver beauty, strength, and long-lasting performance. Backed by expert training and support, we provide the tools and expertise needed to bring any vision to life. Discover the Sundeck difference—where innovation meets craftsmanship.

Durability, Beauty, Innovation—The Sundeck Way!



www.sundeck.com
+1 (877) 478-6335
solutions@sundeck.com

616 E. Avenue J
Grand Prairie, TX 75050
Sundeck Products USA, Inc.
2025 ©