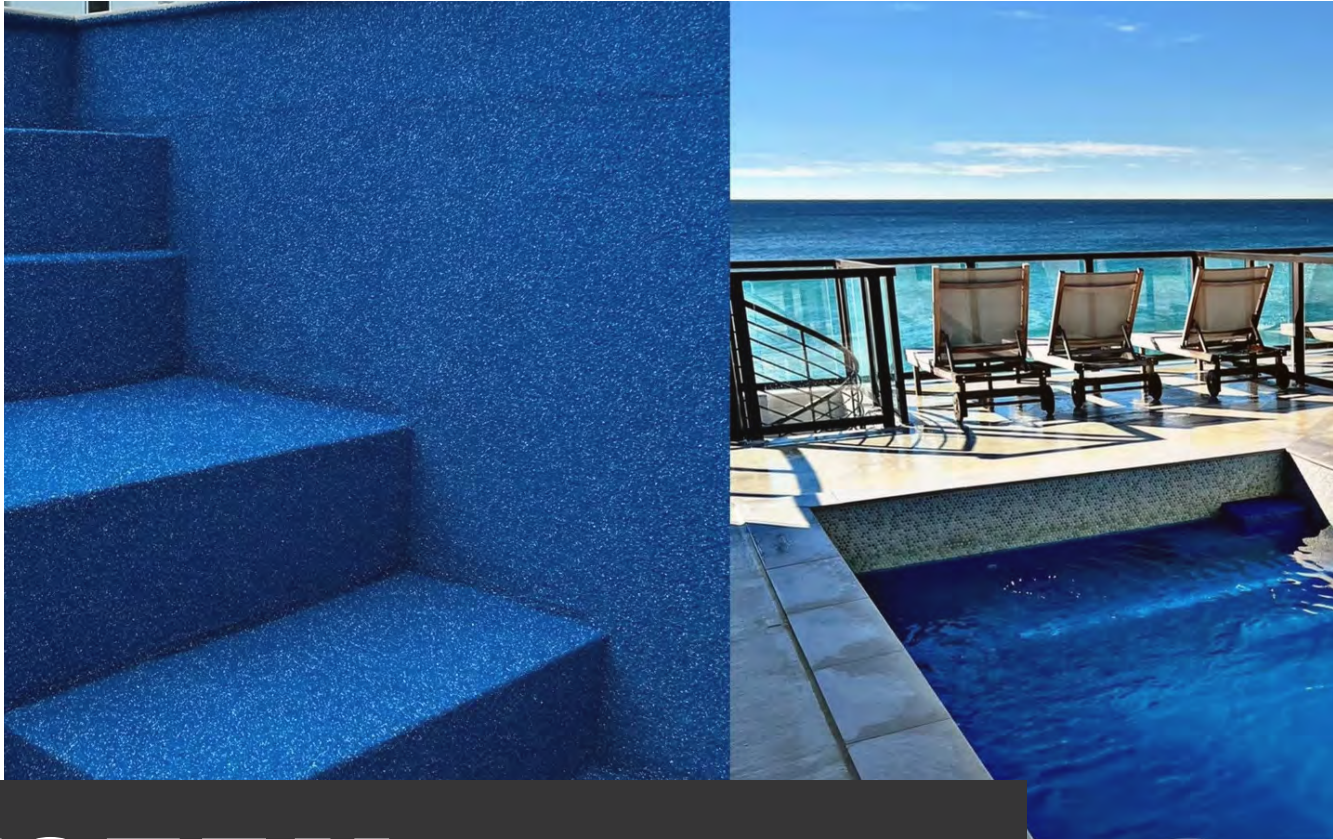




YOU STAND **ON IT.
WE STAND **BEHIND** IT.**



SYSTEM BOOKLET

SUNPLAY

**ADVANCED
COATINGS**

**THE SAFER,
SOFTER, SMARTER
SURFACE SYSTEM**



Introducing **SUNPLAY**

WELCOME TO OUR **SUNPLAY** SYSTEM

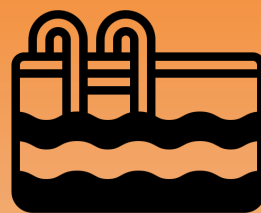
A white sun icon with rays, positioned to the right of the word 'OUR' in the main title.

At Sundek, we pride ourselves on delivering innovative solutions that combine aesthetics with durability. **The SunPlay System** is a resilient, multi-layer deck coating system engineered for soft, safe, slip-resistant surfaces around pools, splash pads, and play areas. Designed for comfort and performance, SunPlay transforms concrete into vibrant, resilient surfaces that stand the test of time.



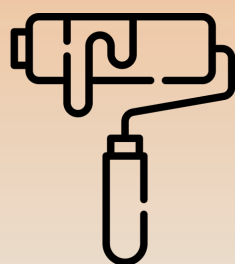
SLIP-RESISTANT COMFORT

SunPlay's thermoplastic granules offer a cushioned feel while providing secure traction for wet, barefoot-friendly areas.



POOL DECK PERFORMANCE

Tested against chlorine, UV, and harsh chemicals, SunPlay is made to thrive in demanding aquatic environments.



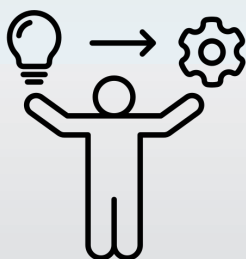
VIBRANT DESIGN FLEXIBILITY

Over 24 standard color blends—and limitless custom combinations—ensure tailored designs that match any theme or vision.



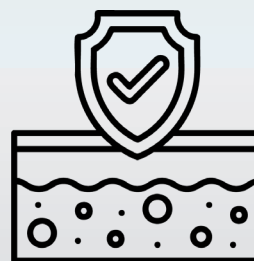
DURABILITY WITH EASE

SunPlay withstands heavy traffic, weather fluctuations, and direct sun exposure. Built for longevity with easy-to-follow maintenance routines.



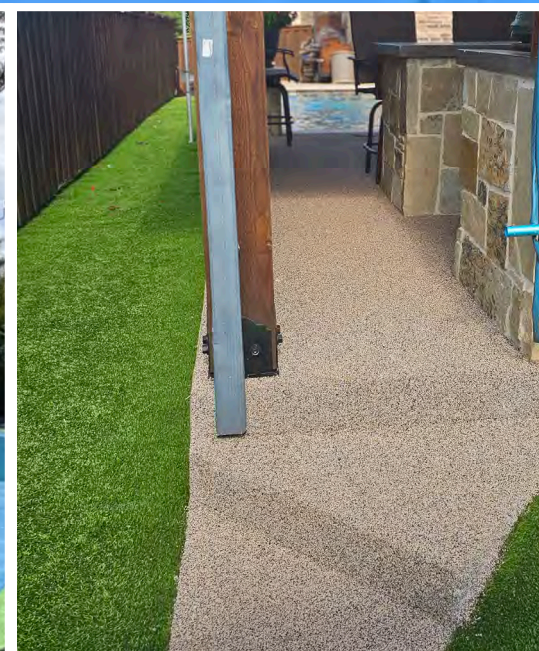
EASE OF INSTALLATION

SunPlay can be applied over your existing pool surface, saving the time & money spent removing old plaster or pebble! Less mess & less noise! Minimal tools needed for installation!



CHLORINE STABLE

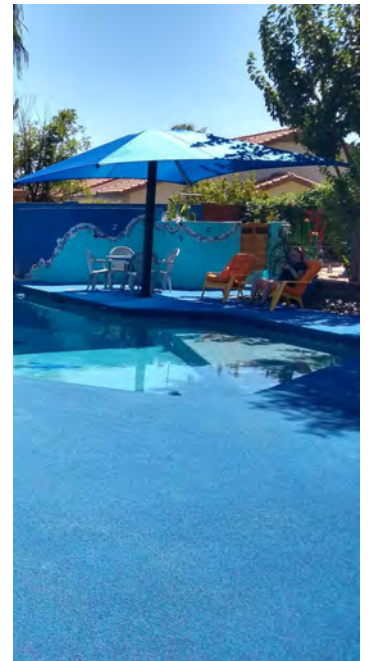
SunPlay surfaces have been lab tested and approved as chlorine stable. SunPlay materials have been used in demanding commercial and public splash pad applications for years.



**WATER
PARKS
AQUATIC
AREAS
RECREATIONAL
ZONES
WATERFRONT
COMMUNITIES
RENOVATION
PROJECTS
APPLICATIONS**



From pool decks to splash pads, the SunPlay System is built for environments where comfort, safety, and resilience are non-negotiable. Its dual-layer system of polymers and TPV granules provides unmatched slip resistance and a cushioned feel—ideal for barefoot traffic in wet areas. Made with materials proven in high-traffic commercial spaces, SunPlay resists abrasion, chemical leaching, fungal growth, fire, and ozone exposure. Whether it's for a resort, playground, or residential pool, SunPlay delivers a surface that's safer, softer, and smarter.



POOL DECKS & SPLASH PADS

Designed for direct exposure to water, heat, and foot traffic, SunPlay delivers soft comfort and non-slip assurance where it matters most.

RECREATIONAL ZONES

Whether it's an aquatic playground or a kid-friendly patio, SunPlay's impact-dampening finish and bright colors make it a go-to for fun and safety.

WATERFRONT COMMUNITIES

From beautiful resorts to private residential developments, SunPlay provides a low maintenance solution that performs under both aesthetics and functional needs.

RENOVATION & REMODEL

SunPlay is ideal for revitalizing tired, damaged, or outdated concrete around pools or patios—bringing new life with modern comfort.

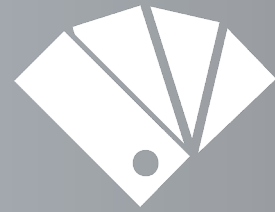
SUNPLAY SYSTEM **TECHNICAL** SPECIFICATIONS



COMPOSITION

Multi-layer system consisting of:

- ◇ One-component polyurethane primer
- ◇ Two-part aliphatic polyurethane polymer base
- ◇ Thermoplastic TPV granules (0.5–1.5mm)
- ◇ Acrylic clear top coat sealer



COLOR OPTIONS

12 beautiful blends to choose from!





Engineered with performance and longevity in mind, the SunPlay system is backed by rigorous testing and top-tier materials. This section outlines the multilayer composition, physical performance data, and system resilience that make SunPlay the trusted choice for aquatic concrete surfaces.



THICKNESS & BOND STRENGTH

Total build-up of ~3/16". Superior adhesion to properly prepared concrete, plaster, epoxy, and other surfaces.



TESTING & CERTIFICATIONS

- ♦ Tear Strength & Elongation: >400% stretch
- ♦ Shore A Hardness: 65°A
- ♦ UV & Chlorine Resistance
- ♦ Fire, Ozone, and Fungal Resistance
- ♦ Non-toxic; No chemical leaching



SURFACE PREPARATION

Ensuring a clean, dry, and well-profiled surface is essential to achieving strong adhesion and long-term system integrity.

Concrete must be fully cured for at least 28 days before application begins. The surface must be bone dry—not just surface dry—and free of contaminants. A minimum CSP profile of 2 to 3 is required for proper adhesion. For smooth, previously coated, or unknown substrates, the use of SunPlay Primer is highly recommended.



APPLICATION STEPS

SunPlay is designed with straightforward application steps that create a consistently durable and safe surface. Follow the recommended sequence to achieve optimal performance and finish quality. Begin by applying the SunPlay Primer at approximately 400 square feet per gallon. Once dry, apply a first coat of polymer evenly across the prepared substrate. The second coat should include a full broadcast of TPV granules to refusal. For enhanced depth and traction, repeat the process with a third coat of polymer and another granule broadcast. Finish the installation with two perpendicular passes of a clear acrylic sealer to lock in the surface and provide long-lasting protection.



TOOLS REQUIRED

Having the right tools helps ensure an efficient and even installation. This includes notched squeegees or 3/4" nap rollers for even coating, a paddle mixer or mortar mixer for consistent blending, spike shoes for walking over wet surfaces, and vacuums, brooms, and pump sprayers for cleaning and sealing. These tools streamline the process and help deliver a professional finish.

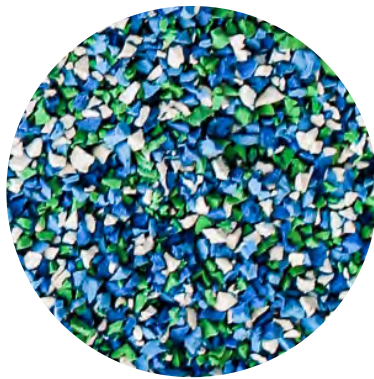


CURE TIME

Curing times will vary depending on temperature and humidity, but proper scheduling ensures the system sets fully before exposure to traffic or water. Generally, the surface is walkable within 12 to 24 hours after the final coat is applied. For best results, allow at least 48 hours before exposing the surface to water or resuming pool activity.



CORAL REEF



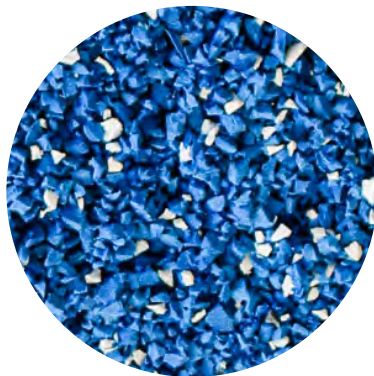
EMERALD BAY



DESERT WINDS



SAPPHIRE SAND



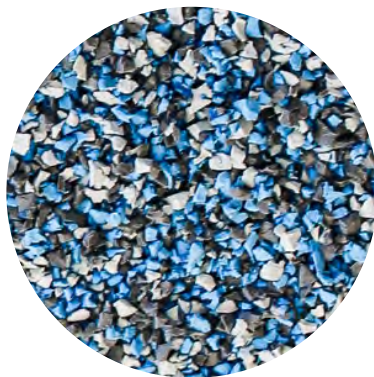
TAHOE SUMMER



ISLAND PARADISE



ROCKY SHORELINE



TRADEWINDS



BAJA DUNES



ROCKAWAY BEACH



TROPICAL COBALT



QUARTZ QUARRY

Design Customization



**DESIGN
CUSTOMIZATION**

**COLOR
BLENDS**

Twelve beautiful color blends are available. Mix and match to create playful patterns or subtle elegance.

**AGGREGATE
BROADCAST**

Two-layer granule broadcast ensures both aesthetics and functional traction. Granules are reusable and recyclable.

**PATTERN
CREATION**

Tape, stencil, or hand-broadcast designs to add visual depth or branding into the surface.



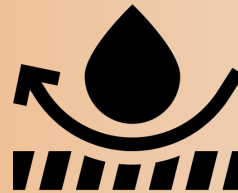


SUNPLAY SYSTEM MAINTENANCE & CARE



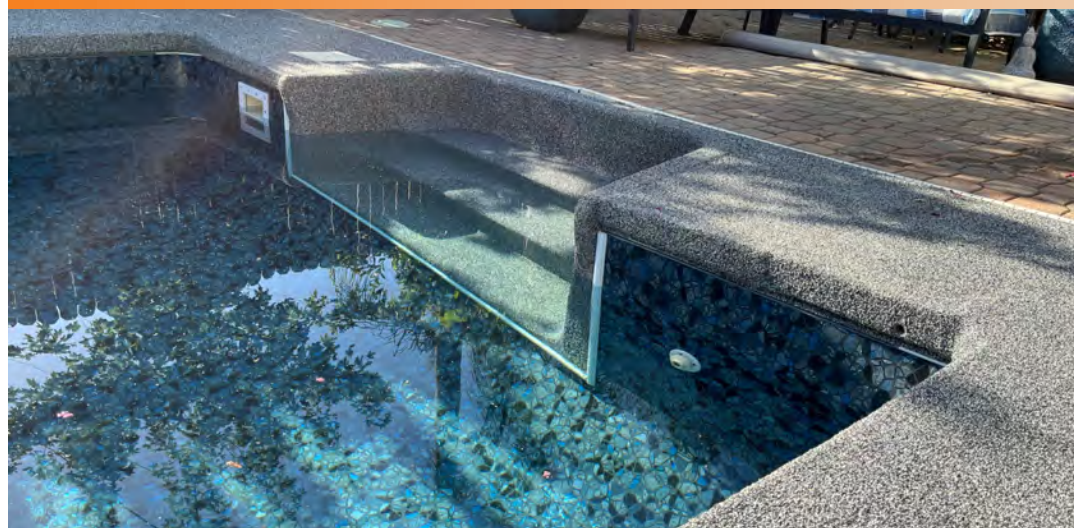
ROUTINE CLEANING

While your SunPlay surface is durable and dependable, keeping any decking system in peak condition requires routine cleaning. Establish a regular cleaning schedule to remove accumulated dirt, leaves, and potted plant residue. Use Simple Green Pro Strength or a similar mild detergent with a stiff-bristle brush to scrub the surface and rinse thoroughly.



PERIODIC SEALING

Annual re-sealing is recommended to maintain stain resistance and color vibrancy. Be sure to clean and dry the surface completely before applying the new topcoat.

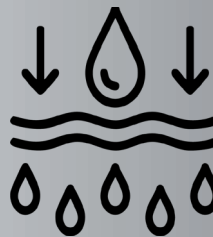


SunPlay is built to last, but like any high-performance system, it benefits from simple routine care. **Regular cleaning, periodic sealing, and prompt repairs ensure the longevity and aesthetic appeal of the system.** Following these guidelines will help preserve the surface's durability and enhance its performance over time.



GRANULE RELEASE & REPAIRS

Minor release of excess granules is normal during the first few weeks following installation. These lightly bonded granules do not impact performance and can be removed with stiff brooms or household carpet vacuums. If small surface repairs are needed, they can typically be patched and resealed with ease. With basic upkeep and periodic sealer reapplication, your surfaces will stay beautiful, safe, and vibrant for years to come.



AVOID MOISTURE TRAPS

Avoid placing potted plants directly on the surface—use pot deck protectors and clean underneath them regularly. Do not leave mats or rugs on the surface for extended periods, particularly during rainy seasons, to prevent mildew or discoloration.





SUNDEK FAQ's SUNPLAY

Choosing the right concrete resurfacing solution can come with many questions. **Here, we address some of the most common inquiries about SunPlay**—its applications, durability, maintenance, and more—to help you make informed decisions and get the best results from your installation.

CAN SUNPLAY BE APPLIED OVER EXISTING COATINGS?

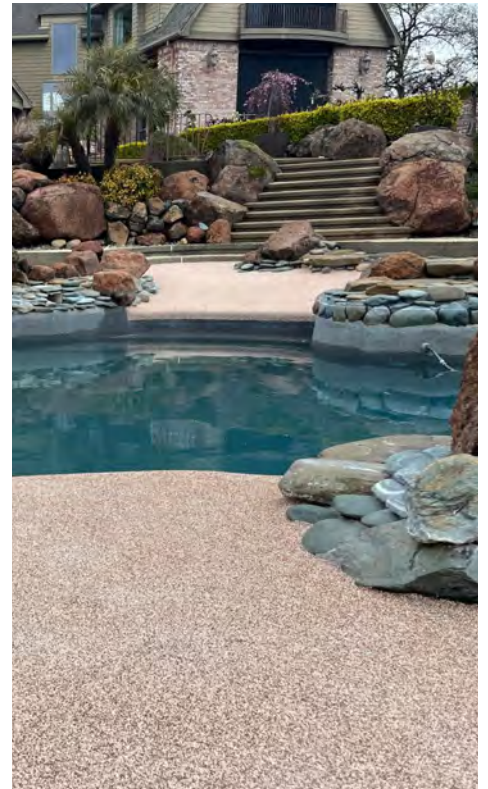
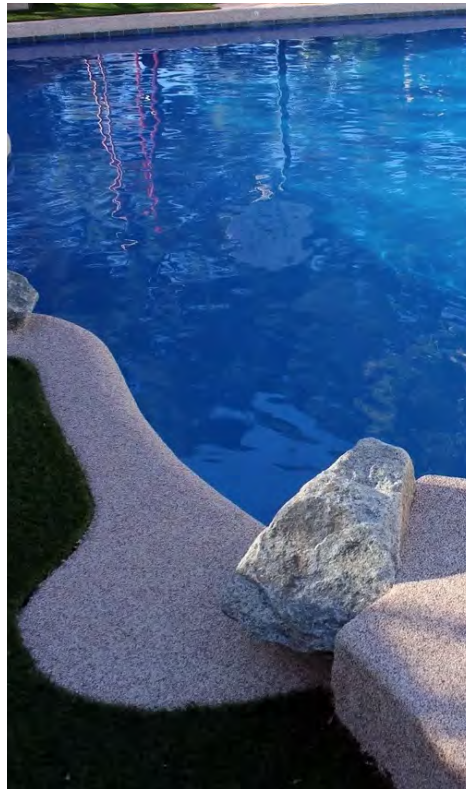
Yes, SunPlay can be installed over properly prepared existing coatings, as long as the surface is sound, dry, and profiled correctly. Use of the SunPlay primer is recommended to enhance adhesion.

IS SUNPLAY AVAILABLE IN CUSTOM COLORS?

Yes, in addition to our 12 standard blends, custom color options can be discussed.

HOW LONG DOES SUNPLAY NEED TO CURE BEFORE USE?

The system is walkable within 12 to 24 hours after final application and can typically be exposed to water or pool activity after 48 hours.



WHAT KIND OF MAINTENANCE DOES SUNPLAY REQUIRE?

Routine cleaning with mild soap and water and an annual reapplication of the topcoat sealer will keep the system in optimal condition.

IS SUNPLAY SUITABLE FOR USE AROUND POOLS AND SPLASH PADS?

Absolutely. SunPlay is specifically designed for wet environments. Its soft, slip-resistant surface is ideal for barefoot traffic in poolside and aquatic areas.

CAN SUNPLAY BE USED IN EXTREME WEATHER CLIMATES?

Yes, the system has been tested for performance in both hot and cold environments and is resistant to UV, chlorine, and harsh chemicals.

WILL GRANULES BE RELEASED OVER TIME?

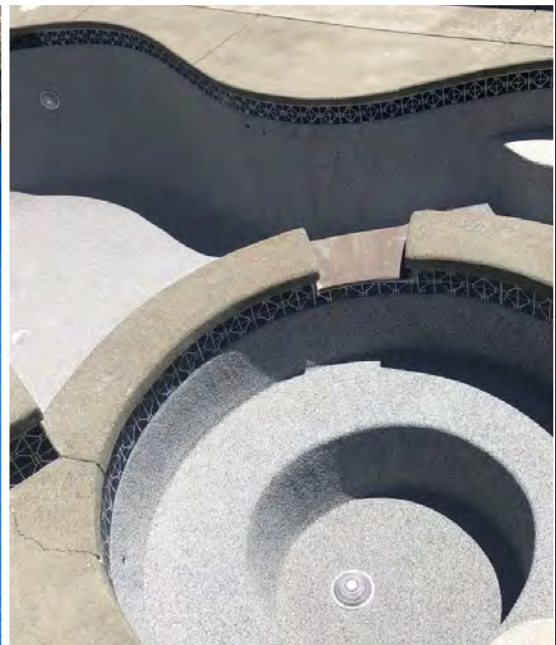
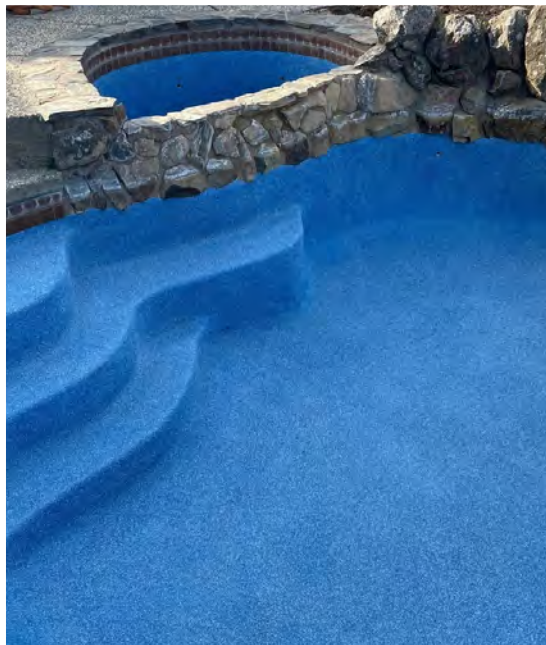
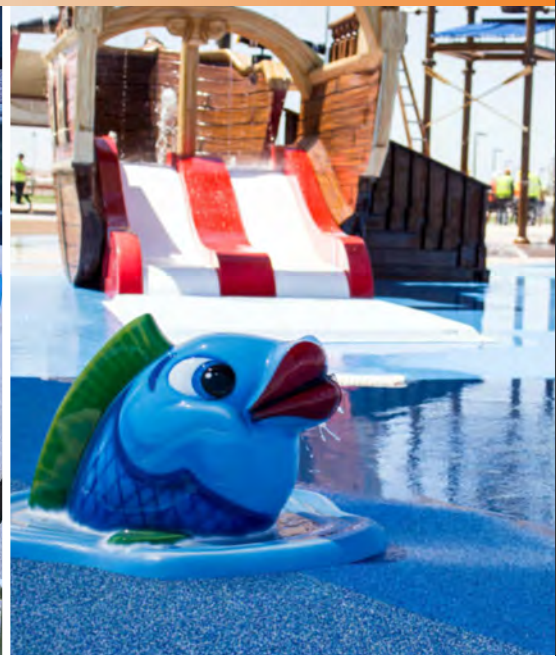
Initial release of loose granules is normal and expected within the first few weeks. Proper brushing and vacuuming help minimize this effect.

WHAT SURFACES CAN SUNPLAY ADHERE TO?

SunPlay adheres well to properly prepared concrete, plaster, rock/pebble finishes, brick, and many epoxy coatings. Use of primer is advised on smooth or coated surfaces.

IS SUNPLAY ENVIRONMENTALLY FRIENDLY?

Yes. The TPV granules used in SunPlay are non-toxic, UV-stable, and made without heavy metals or harmful plasticizers, contributing to a safer surface and greener installation.





THE FUTURE IS BRIGHT WITH **SUNDEK®**



SCAN ME

SUNDEK – INNOVATING CONCRETE SURFACES FOR OVER 50 YEARS

For over 50 years, Sundeek has been a leader in innovative concrete resurfacing solutions, transforming ordinary surfaces into extraordinary spaces. Our commitment to quality, durability, and design flexibility has made us a trusted partner for architects, contractors, and property owners nationwide. Whether enhancing commercial, residential, or public environments, Sundeek's cutting-edge systems deliver beauty, strength, and long-lasting performance. Backed by expert training and support, we provide the tools and expertise needed to bring any vision to life. Discover the Sundeek difference—where innovation meets craftsmanship.

Durability, Beauty, Innovation—The Sundeek Way!



www.sundeek.com
+1 (877) 478-6335
solutions@sundeek.com

616 E. Avenue J
Grand Prairie, TX 75050
Sundeck Products USA, Inc
2025 ©