



# SUNDEK®

*You stand on it. We stand behind it.®*

## MAINTENANCE INSTRUCTIONS FOR DECORATIVE CONCRETE COATINGS

SundeK has created a product line that has powerful, exclusively formulated SundeK cleaners that help take the mystery out of deck maintenance. These and other products found at your local hardware store are easy finds that help to keep your deck beautiful for years. Contact your local SundeK dealer to purchase.



Specially formulated for SUNDEK PRODUCTS is the ultimate decorative concrete **general purpose** cleaner. SUNKLEEN penetrates through the **greasy soil** and breaks the bond at the surface. It will pay for itself in its virtually unlimited application by replacing many obsolete **degreasers** with one **all purpose concentrate**.



This product is a highly **concentrated solvent-based degreaser** made from oils of citrus fruits. SUNSPOT is used on decorative concrete textures and will remove **tar, grease, asphalt, tire marks, tree saps, and most other oils based stains**.



Specially formulated for SUNDEK PRODUCTS, this **environmentally friendly** product produces the cleaning power of concentrated Muriatic Acid products with the **safety and ease** of a normal detergent product. SUNTOUGH represents a breakthrough in concrete etching and helps to prepare concrete to insure **positive reaction and penetration** for decorative concrete overlay applications.

## GREASE – OIL – BEVERAGES – FOOD



1. Rinse the area with water.
2. Apply a solution of citrus-based cleaner or equivalent.
3. Lightly scrub the area with a stiff-bristled brush or comb.
4. Allow to soak without drying.
5. Lightly scrub and rinse thoroughly.



\*Additional scrubbing or applications may be required for stubborn stains.

\*Citrus-based cleaners such as *Nature's Orange*, *Simple Green* and *TSP* work very well and are available at home improvement centers and janitorial supply centers.

## HARD WATER DEPOSITS – RUST – SOIL – PLANT – WOOD

Regular cleaning of Sundeck by hosing and using a squeegee or push broom to remove standing water is the most effective method of minimizing these stains. If stains begin to appear, clean the area with *Lime Away*, *Whink*, or a commercial descaler and rinse well. Heavier mineral deposits require more aggressive procedures such as a light acid wash.

1. Mix Muriatic acid solution. (20-40% acid to water)
  - a. **ALWAYS add acid to water not water to acid.**
2. Dampen the surface with a mist of water.
  - a. **DO NOT apply acid to dry surface!**
3. Apply acid solution to damp surface with plastic sprayer or sprinkler can.
4. Lightly scrub deck with a deck broom until the solution stops "fizzing."



5. When the fizzing activity stops, it is a sign that the acid has finished working.
  - a. **DO NOT allow solution to dry!**
6. Rinse off solution with high-pressure nozzle.
7. Use a squeegee or deck broom to remove any excess water.
8. Neutralize with soda ash, baking soda or TSP - scrub lightly.
9. Rinse thoroughly and squeegee or broom off water.

**CAUTION:** Always wear protective eye and skin wear when working with any acid solution. Follow safety guidelines printed on containers including use of proper respirator.



intensity of stain



## MILDEW AND ALGAE



This type of stain usually occurs in shaded locations where water puddles. If treated early, mildew and algae can easily be removed.

1. Mix 50% pool chlorine to water.
2. Apply directly onto affected area with plastic sprayer or sprinkler can.
3. Lightly scrub the chlorine solution over the affected area.
4. Allow the solution to soak without drying.
5. Rinse the area completely when the solution has stopped reacting.
6. Squeegee or broom water from deck.
7. Stubborn deposits require soaking with a more concentrated solution and moderate scrubbing.

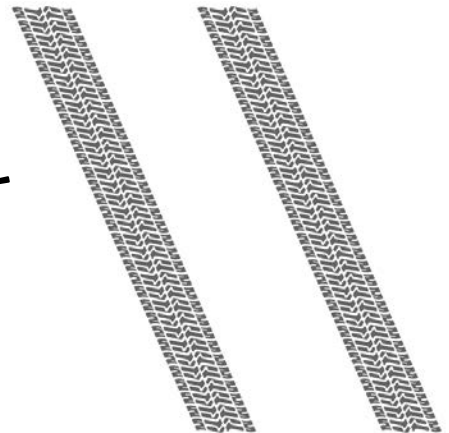


## BLACK RUBBER MARKS

1. Apply concentrated solution of citrus-based cleaner with sprinkler can.
2. Spread the solution over the area with a deck broom.
3. Allow the solution to soak without drying.
4. Completely scrub the area.
5. Rinse thoroughly with high-pressure nozzle.
6. Squeegee or broom off water.

High traffic areas may require repeated applications for maximum results.

The best maintenance tip for black tire marks is to hose and clean the area on a regular basis to prevent a heavy build up of rubber and asphalt residue. Other good cleaners that can be used include *Simple Green*, *Nature's Orange*, *Amway LOC* or *TSP*.



## CHEWING GUM – TAR – TREE SAP

1. Freeze with dry ice or CO2 type fire extinguisher and chip off with putty knife.
2. Spray remaining residue with *Disolvit* or *Goof Off*.
3. Scrape off with putty knife.
4. Clean area with citrus-based cleaner or equivalent.
5. Rinse off any remaining residue.



## PAINT

Paint that is spilled or sprayed on Sundeck should be quickly wiped up with a cloth. If the paint has dried, the affected area can be touched up with Sundeck Finish Coat. Apply as you would water-based paint. Heavy paint-globs must be scraped off prior to applying the Sundeck Finish Coat. ***Do not use paint removers!!! These will cause damage to the Sundeck finish.***

